



Japan. Endless Discovery.

北海道



7D5N

HOKKAIDO YUKI MONOGATARI + ICE BREAKER CRUISE



HIGHLIGHTS

- Experience** - Akan Hot Spring the most famous hot spring in eastern Hokkaido
Okhotsk Tower is the first ice outlook tower of the world
Sounkyo Cable Car to reach the fifth station of Mt. Kurodake
- Attraction** - Sounkyo Gorge - be amazed by the 120 meter high **Milky Way Waterfall**
and 90-meter high **Shooting Stars Waterfall**. These two waterfalls are the
most popular and beautiful among all the falls.
- Mombetsu ~ the land of the winter floating ice
- Shopping** - Shopping fun at Tanukikoji / Susukino / Factory Outlet Mall
- Taste** - Deluxe Seafood / Live Grill Abalone / Shabu-Shabu Cuisine

LET'S HAVE A CHAT **65-6533 5161**

applevacations.com.sg



Day 1 SINGAPORE CHANGI AIRPORT → NARITA/KANSAI AIRPORT (MOB)

- Assemble at Singapore Changi Airport before boarding your flight to Japan.
- Accompany by our Tour Manager, board a night flight to Japan – Have a good Rest ya !!

Day 2 JAPAN – HOKKAIDO – LAKE AKAN NATURAL ONSEN + AINU VILLAGE (D)

In the early morning, arrive to Japan airport ~ 1 of the busiest airport in the world. Proceed to the domestic terminal for domestic flight to Northern region ~ scenic Hokkaido. Arrive at the land of nature ~ 1 forth of the whole Japan side but Natural.

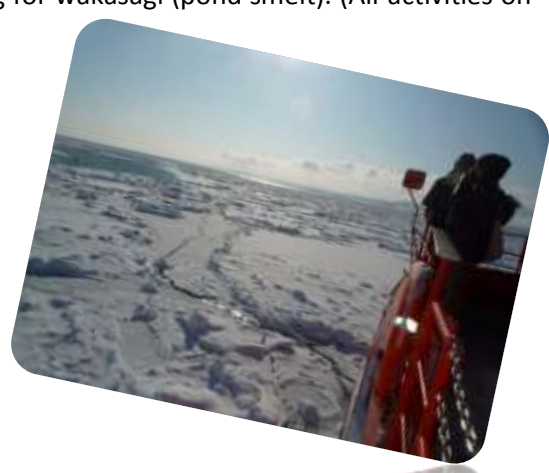
- Lake Mashu** ~ the lake is obscured by swirling mists and thick cloud and has the most transparent water in the world.
- Lake Kussharo** ~ not 100% frozen lake in winter as this is the hot spring lake; well, during winter you will find no of natural birds flying in here to warm up such as geese and sea gull.
- Ryuosan** ~ it's a boiling volcano, where sulfurous fumes rise from crevices in the rocks and it's legendary.
- Akan National Park**, the mysterious lake where Marimo weed balls grows, and also one of the famous fishing spot.
- After dinner, The Akan snow festival on the frozen lake are awaiting from your participation. Then let stroll along the **Kotan, Ainu Village** where there is plenty of souvenir shops offering traditional handicrafts. *FYI Ainu is the Orang Asli of the Japanese.*



Day 3 LAKE AKAN SNOW ACTIVITY – ABASHIRI – ICE BREAKER- MOMBETSU (B/L/D)

In the morning, before we check out from the hot spring resort; we spend some time for snow activities;

- "Ice Land Akan"**. The massive location, 26km in circumference, features winter activities such as Banana boat mobiling (the most popular!), and ice fishing for wakasagi (pond smelt). (All activities on own expenses). Later the fish can be fried at the little restaurant nearby.
- Drive through the snow forest**; enjoy the un-usual seen scenery, to arrive to Abashiri ~ the small town at the sea of Okhotsk costal.
- After an organic syabu-syabu lunch, let's see the nature sea gull flying and haply at the lake side
- Mombetsu** ~ the land of the winter floating ice!



Today's highlight:

ICE-BREAKING CRUISE by the Garriko II! (Subject to weather and ice condition). Hop aboard the ice-breaking sightseeing boat to witness the drift ice floats across the Sea of Okhotsk.

- Tonight, overnight at **Mombetsu Prince Hotel** where you can enjoy the **Deluxe Crab Meal** in the hotel ~ you may shocked by the crab meats served.

At Mombetsu, we will discover 2 more interesting places which related to ice & winter!

- ❑ **Okhotsk Tower** is a natural observation room. You can observe the wonders of the sea from a window. The mystery of drift ice and a marine organism can be touched.
- ❑ **Okhotsk Tokkari Center** – Seal Protection Center, house to more than 50 seals, visitors can interact with the seals up close and personal.

Then we proceed to mountain range of the national park area; where

- ❑ **Mt. Kurodake** - Sounkyo Ropeway (Subject to weather condition) takes about seven minutes to reach the fifth station of Mt. Kurodake, from which visitors can enjoy a panoramic view.
- ❑ **Sounkyo Gorge** is flanked on both sides by 150m high perpendicular cliffs with columnar joints. Next up, be amazed by the 120 meter high **Milky Way Waterfall** and 90-meter high **Shooting Stars Waterfall**. These two waterfalls are the most popular and beautiful among all the falls.

Tonight you can enjoy several of soaking pools and outdoors hot spring bath facilities and delicious seasonal Japanese cuisine in the hotel at **Sounkyo**.

- ❑ From end January to mid-March – The Sounkyo Ice Lighting festival will impress you (weather is below 15c).



Let's see what we have for today!

- ❑ *The highlight of today is the **Snow Mobile** excursion (own expense) ... like the James Bond ... Mobilizing in the snow hill, of course you can enjoy the magnificent scenery along pretty gorges and ravines.*



OTARU:

Originally named Otarunai ("River of Sands") from the native Ainu language, it was renamed Otaru when development of Hokkaido started in Ernest. Located approximately 30 km west of **Sapporo** on the northern tip of Hokkaido's Shiribeshi district on the Sea of Japan side, it is a harbor and port facility city. During the development of Hokkaido, Otaru experienced a boom as one of the only port facilities in this region and also as a herring fishing area. During this boom period many of the places to visit were constructed. Now Otaru has approximately 146,297 people and was designated as a city on August 1st 1922.

- ❑ **Otaru Canal** ~ the most remarkable & beautiful spot for picture.
- ❑ **Otaru Handicraft Street** - **Glass handicraft shop, music box shop**, museum, art gallery, the ice cream, the sushi...
- ❑ Shop at area the **Tanukikoji** & its underground shopping street - enjoy your shopping at more than 150 boutiques, souvenirs, shops and the 100 yen shop too! Well LV also here!
- ❑ The **Susukino** nightlife entertainment area, is the Sapporo's famous nightspot for fun

Day 6 SAPPORO CITY TOUR – SEAFOOD MARKET – CHITOSE– HND/KIX

(B/L/D)

Hokkaido capital city: **SAPPORO** a 1.5 million of inhabitant and American designed

- ❑ **Hokkaido's Former Government Building**, the **Odori Street** – also known as the 4 season park, it is the venue of the annul ice carving festival. We will also visit the **Sapporo TV's Tower**, pass by the **Clock House** and Sapporo American-designed streets.
- ❑ Let's have a brief visit to see the landmark of Japan ~ the shrine of the Emperor: **Hokkaido Jingu**, the representation of the highest belief of the Japanese; not forgetting the impressive architecture and design.

TODAY'S HIGHLIGHT!

GALA Seafood lunch presented by Apple Vacations & prepared by the chief of Hokkaido Kita Gourmet Kitchen at the wet market area!

1. *Live Tarabagani big crab*
2. *Live Abalone in Japanese butter grilled*
3. *Grilled Fresh Scallop*
4. *The Salmon Fish butter fried*
5. *The Crab meat soup and porridge*



- ❑ **Factory Outlet MALL** – the latest shopping experience in Japan for bargaining branded items, a place to be seen emptying your wallet!
- ❑ Overnight at Chitose airport hotel or Narita/Kansai airport hotel (subject to domestic flight connection)

Day 7 NARITA / KANSAI → SINGAPORE

(B+MOB)

After breakfast, proceed to airport for your departure flight to **SINGAPORE**.

Terms & Conditions:

(SJPI07) (D)

1. Flight details, itinerary, hotel and meals which stated on the itinerary above are subjected to change according to different departure date without prior notice. Any changes after booking will be inform accordingly.
2. The sequence of itinerary, meals and hotel arrangement are subjected to the final adjustment of the local ground operator.
3. Principally tour commentary will be conducted in Chinese speaking. However, others languages can be arrange on request basis.
4. Triple room sharing will base on extra roll in bed basis.
5. We strongly recommend you to purchase travel insurance before departure.
6. To ensure the benefit of consumer, please refer to the standard terms & conditions at the back page of your invoice.

LET'S HAVE A CHAT **65-6533 5161**

applevacations.com.sg

